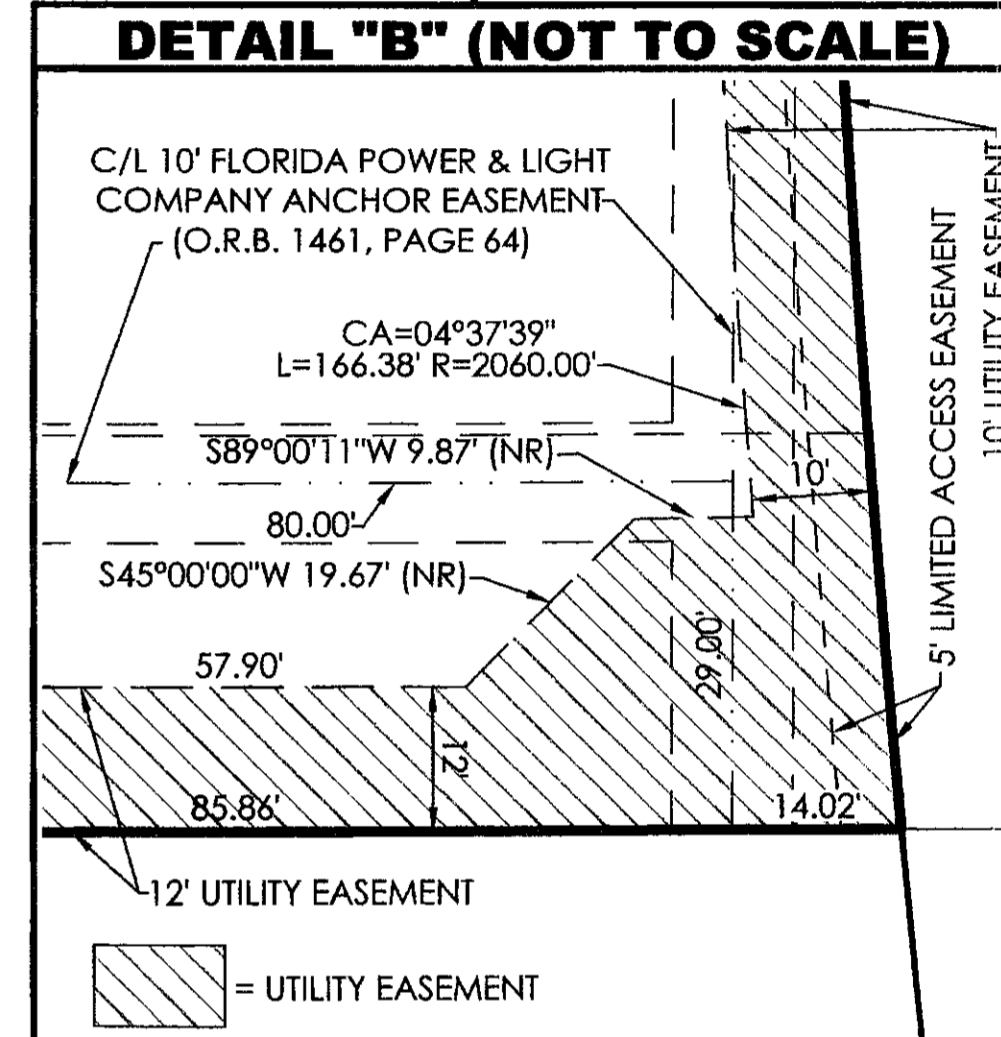
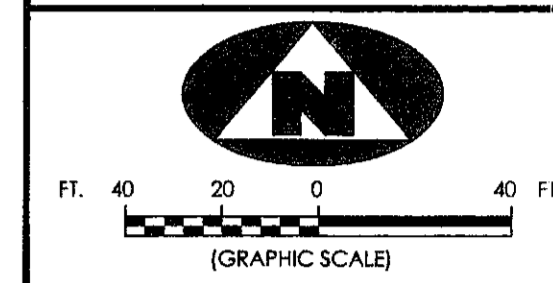
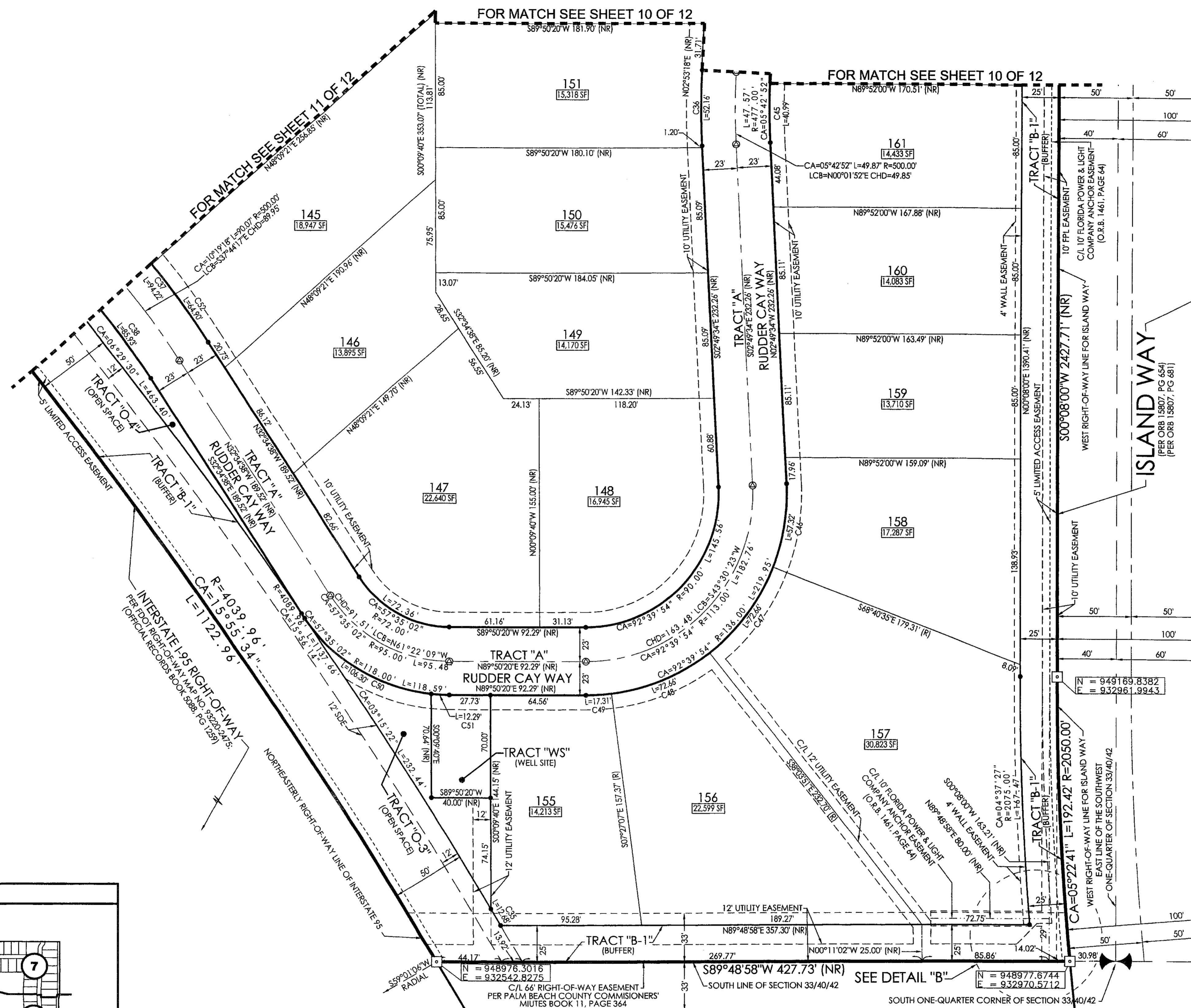


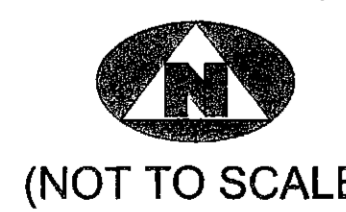
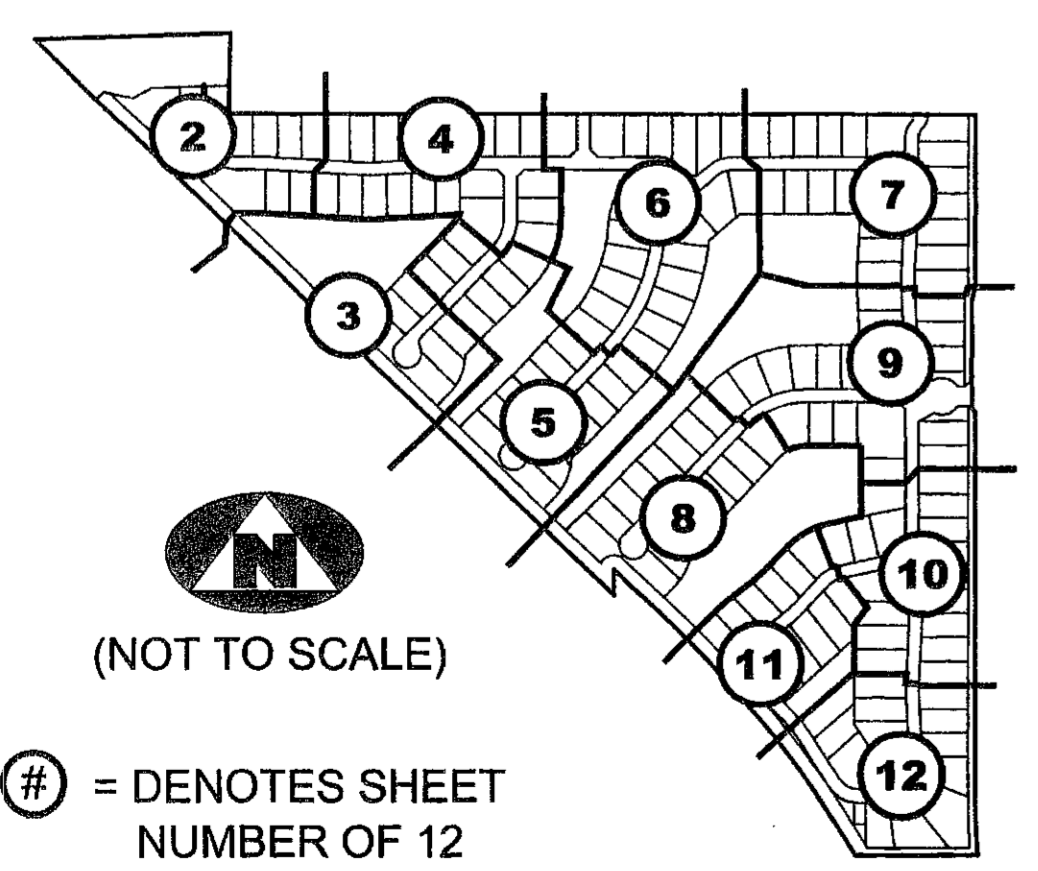
206



TROWELL PARK (PLAT BOOK 15, PG 41)

WASHINGTON STREET A.K.A. CHURCH STREET 30' PLATTED RIGHT-OF-WAY (PLAT BOOK 15, PAGE 41)

SHEET INDEX



(NOT TO SCALE)

# = DENOTES SHEET NUMBER OF 12

LEGEND

Table with 4 columns defining symbols for radial lines, centerlines, drainage easements, utility easements, lake maintenance access easements, Florida Department of Transportation, radius distance, arc length distance, central angle, long chord bearing, chord distance, official records book, Palm Beach County, official records book, set permanent reference monument, found permanent reference monument, set permanent control point, non-radial line, and Jupiter Falls drainage easement.

SURVEYOR'S NOTES

- 1. THE BEARING BASE FOR THIS PLAT IS S 89°58'44" AS SHOWN ALONG THE SOUTH BOUNDARIES OF THE PLAT OF JUPITER ISLES PLAT 2, AND JUPITER ISLES PLAT 3, RECORDED IN PLAT BOOK 102, PAGE 183 AND PLAT BOOK 102, PAGE 188, RESPECTIVELY.
2. IN THOSE INSTANCES WHERE UTILITY OR DRAINAGE STRUCTURES ARE CONSTRUCTED IN CONFLICT WITH THE PLATTED PERMANENT CONTROL POINT POSITION STRADDLERS MONUMENTED AS PERMANENT CONTROL POINTS WILL BE SET TO REFERENCE THE PLATTED POSITION.
3. THIS INSTRUMENT WAS PREPARED BY WM. R. VAN CAMPEN, P.S.M. NO. 2424, IN AND FOR THE OFFICES OF ASSOCIATED LAND SURVEYOR'S, INC., 4152 WEST BLUE HERON BOULEVARD, SUITE 121, RIVIERA BEACH, FLORIDA, 33407

Table with 2 columns: FILE: P256LOXPLAT, FB: WO.NO.: P256LOX, SCALE: 1"=40' DATE: 2/27/2005, DWN: KVC SHEET 12 OF 12

CURVE TABLE

Table with 4 columns listing curve data: C35, C36, C37, C38, C45, C46, C47, C48, C49, C50, C51, C52 with values for CA, R, L, LCB, and CHD.

ASSOCIATED LAND SURVEYORS, INC. 4152 W. BLUE HERON BOULEVARD-SUITE 121 RIVIERA BEACH FLORIDA 33404 PHONE: (561) 848-2102 FAX: (561) 844-9659 EMAIL: ALLSSURVEY@AOL.COM